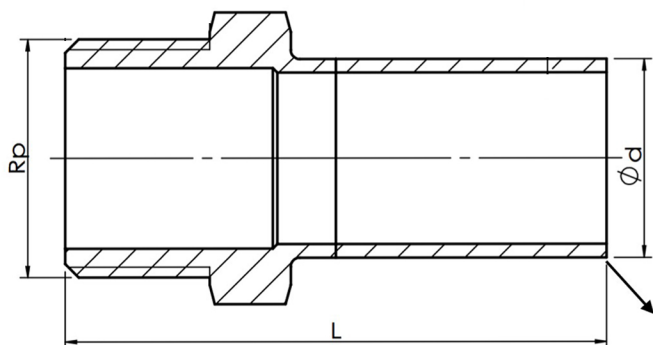


## PRESS FIT MALE STANDPIPE ADAPTOR



GDPRESS fittings offer reliable and consistent performance, combined with an easy installation process using common M-contour design and tooling compatability.

This fitting doesn't contain any seals as per the majority of the Press Fit range - The main use of this fitting is to slot into a Female Press Fit end to then make this end Male BSP. Once slotted into the female end it is then crimped down into place as with the other fittings in this range using a REMS crimping tool.

All fittings are made from 316L (1.4404)  
WRAS approved

Optional Fluoropolymer (FPM) O-rings are also available which offer higher heat and chemical resistance



SIZE	PART No	D	R	L	KG EACH
15	PFMSA15X1/2BSPT	15	1/2"	52	0.04
18	PFMSA18X1/2BSPT	18	1/2"	57	0.05
22	PFMSA22X3/4BSPT	22	3/4"	59	0.08
28	PFMSA28X1BSPT	28	1"	66	0.11
35	PFMSA35X1 1/4BSPT	35	1 1/4"	80	0.19
42	PFMSA42X1 1/2BSPT	42	1 1/2"	91	0.22
54	PFMSA54X2BSPT	54	2"	102	0.36

**\*\* DIMENSIONS SUBJECT TO CHANGE - PLEASE CONTACT US IF CRITICAL \*\***

Application	Operating temperature	Maximum operating pressure	Seal
Hot and cold potable water	0 to 100°C	16 BAR	EPDM
Heating water	0 to 100°C	16 BAR	EPDM
Cooling water without antifreeze agent	0 to 100°C	16 BAR	EPDM
Cooling water with antifreeze agent	-30 to +120°C	16 BAR	EPDM
Service/Treated water	0 to 100°C	16 BAR	EPDM
Rainwater/Grey and black water with a pH value of >6.0	0 to 100°C	16 BAR	EPDM
Extinguishing water	0 to 70°C	16 BAR	EPDM
Extinguishing water (wet/dry, dry)	0 to 70°C	16 BAR	FPM
Sprinklers	0 to 70°C	16 BAR	EPDM
Oils, Fuels and Chemicals	Please contact	Please contact	FPM